

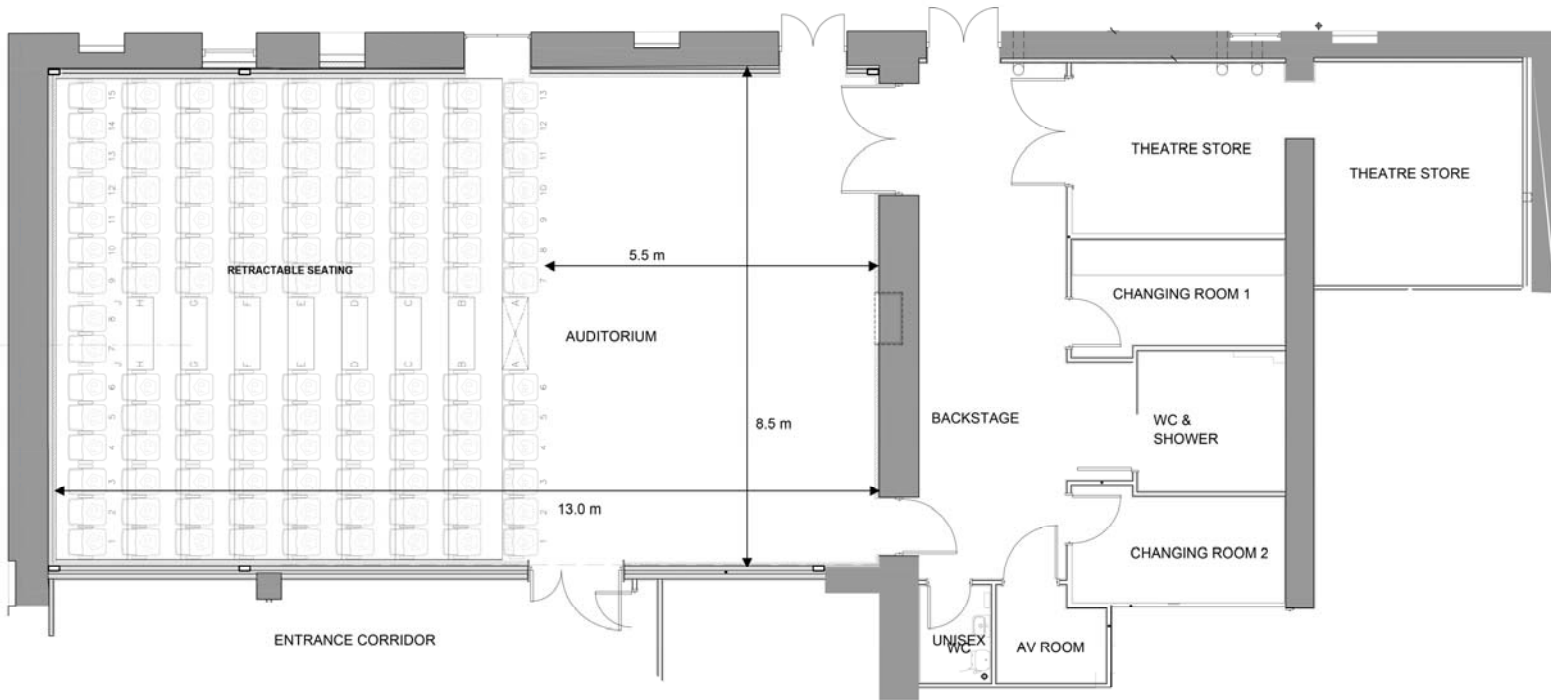
AUDITORIUM



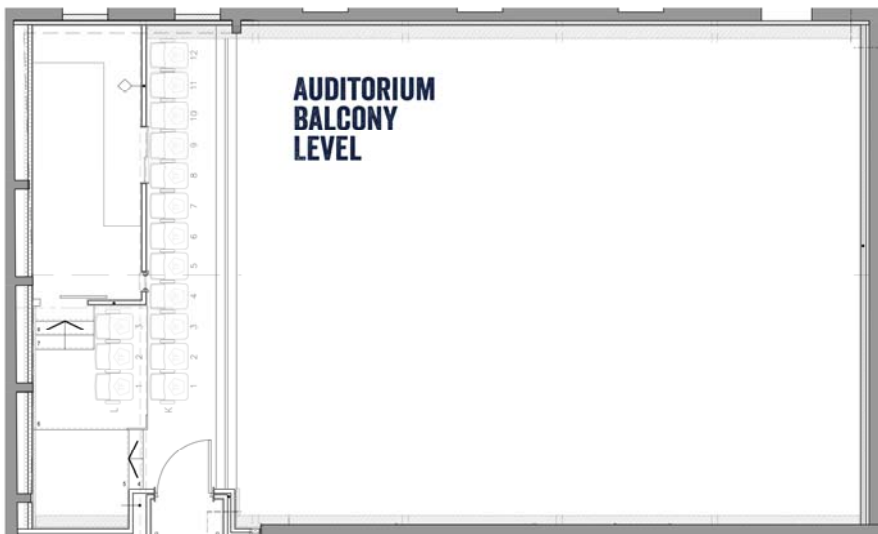
The state-of-the-art Wells Maltings Theatre and Cinema has already been used for a range of events, from film screenings and concerts to talks, lectures and debates. Also for magic shows, live-by-satellite screenings from other prestigious venues, comedy nights and more. This versatile space can also be used as an exhibition and conference space and would be the ideal space for product and book launches. With the modern tiered seating fully retractable, this makes for a very versatile space.

Key attributes	Fully and partly retractable seating Air Cooling System Access to the stage and backstage area from the car park via a ramp and double doors. Induction Loop
Max Capacity Standing	Standing 160 (seats pulled back) Seated 134 (119 in stalls, 15 on the balcony and an additional 11 standing)
Dimensions	Stage Size- 11-9 Metres Auditorium width 8.5 M Floor length – all seats out 5.5 M Floor length – all seats retracted 13 M
Rates	By negotiation, rates from £30 per hour. Please contact to discuss further. Premium for evening hire
Accessibility	Stalls on ground floor. Balcony on 1st Floor, accessible by stairs or lift.
Facilities/technical services available	Technical staff available on request 3x Dressing rooms available equipped with large mirrors and good lighting Backstage Shower room/toilets FLX \$24 Lighting Desk Piano available for hire Bespoke packages (link to theatre spec)

AUDITORIUM GROUND FLOOR



**AUDITORIUM
BALCONY
LEVEL**



Hire Enquiry Form



Thank you for your interest in hiring one of our rooms. Please can you complete and return this form to: The Maltings, Staithe Street, Wells-Next-the-Sea, Norfolk NR23 1AU.

Alternatively you can use our online form available on our website.

We will contact you as soon as possible with availability. Rates advertised are our standard rates, please talk to us about specific requirements or if you need any further information. Contact: 01328 711378. Thank you.

Name	
Company Name	
Telephone	
Address	
Contact Number	
Email	
Are you a registered charity?	
Are you a not for profit organisation?	
Which room/s are you interested in?	
Purpose of hire	
Preferred dates	
Times	
Catering requirements?	
Technical requirements (projector etc)	
Which room layout would you like?	
Can we contact you via email, phone or postal.	
Any other comments?	