

THE CLORE COMMUNITY STUDIO



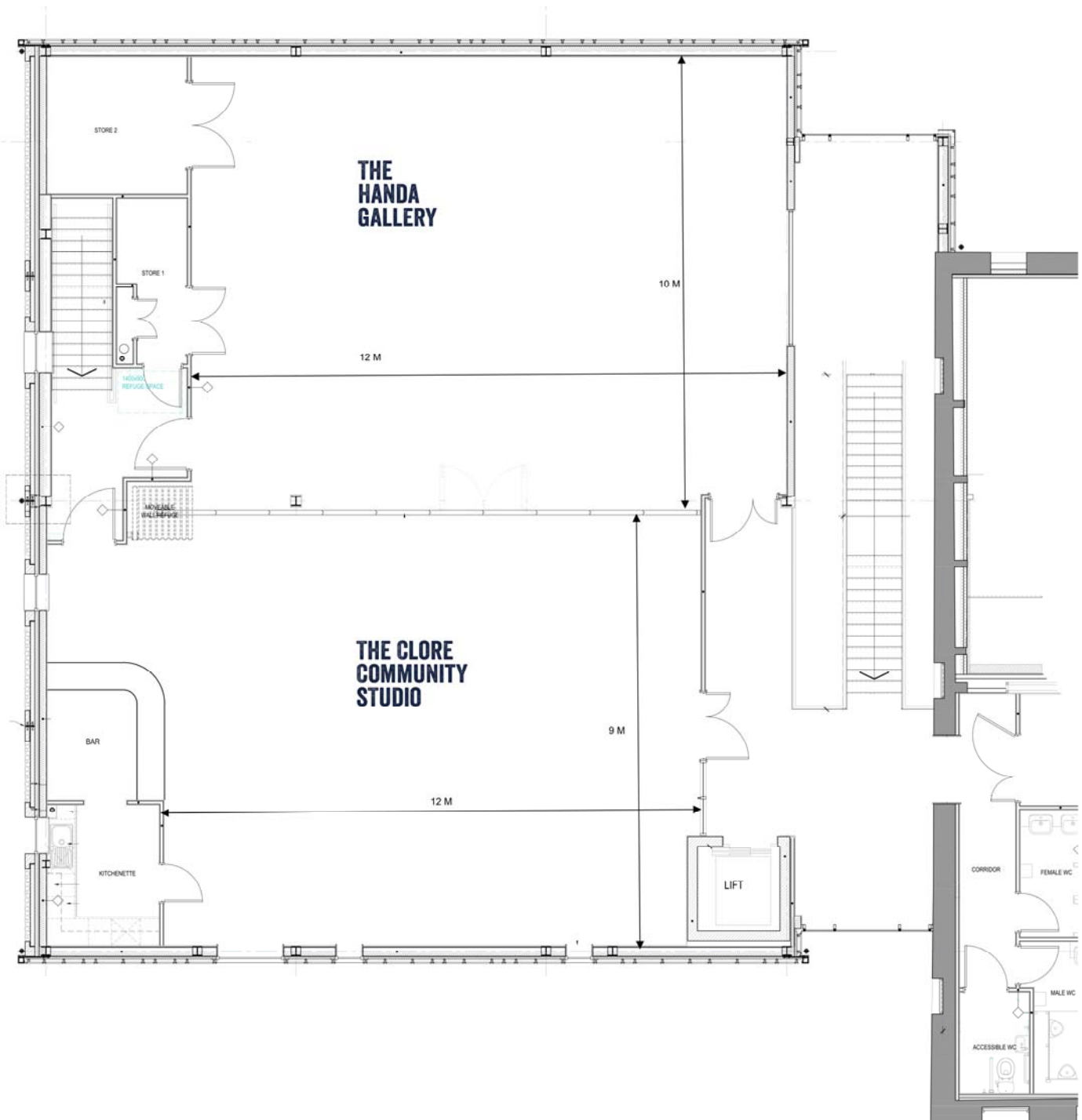
The Clore Community Studio is a light, spacious, welcoming upstairs room which is used for all manner of events, from Yoga and Pilates to children’s creative classes. Uses so far have also included arts and crafts activities for children as well as lunches and dinners – this attractive room has also recently been booked for a ball.

Key attributes	Blocked wooden floor, not sprung Underfloor heating Acoustic cladding Light and airy Good acoustic qualities Wi-Fi
Max Capacity Standing	Standing 120 Cafe 80 Theatre 90 Boardroom 40
Dimensions	12 metres by 9 metres (not including bar area)
Local not for profit rate	Day (7 hours)- £100 Half Day (3.5 hours)- £60 Hour- £17.50
Small Commercial rate	Day (7 hours)- £120 Half Day (3.5 hours)- £70 Hour - £22
Corporate/Local Government rate	Day (7 hours)- £160 Half Day (3.5 hours)- £90 Hour - £30
Accessibility	On 1st Floor, accessible by stairs or lift
Facilities/technical services available	106 inch Flat Screen for presentations direct from file or laptop Chairs and Tables Tea and Coffee making facilities Kitchen and Bar area (bottles only) Toilets facilities opposite on same floor Flipchart and pens

Floor Plans

This floorplan shows The Handa Gallery side by side with The Clore Community Studio on the 1st Floor of the Wells Maltings. There is access via stairs and a lift.

Just visible in the bottom right hand corner are facilities including wheelchair access.



Hire Enquiry Form



Thank you for your interest in hiring one of our rooms. Please can you complete and return this form to: The Maltings, Staithe Street, Wells-Next-the-Sea, Norfolk NR23 1AU.

Alternatively you can use our online form available on our website.

We will contact you as soon as possible with availability. Rates advertised are our standard rates, please talk to us about specific requirements or if you need any further information. Contact: 01328 711378. Thank you.

Name	
Company Name	
Telephone	
Address	
Contact Number	
Email	
Are you a registered charity?	
Are you a not for profit organisation?	
Which room/s are you interested in?	
Purpose of hire	
Preferred dates	
Times	
Catering requirements?	
Technical requirements (projector etc)	
Which room layout would you like?	
Can we contact you via email, phone or postal.	
Any other comments?	