

# THE HANDA GALLERY



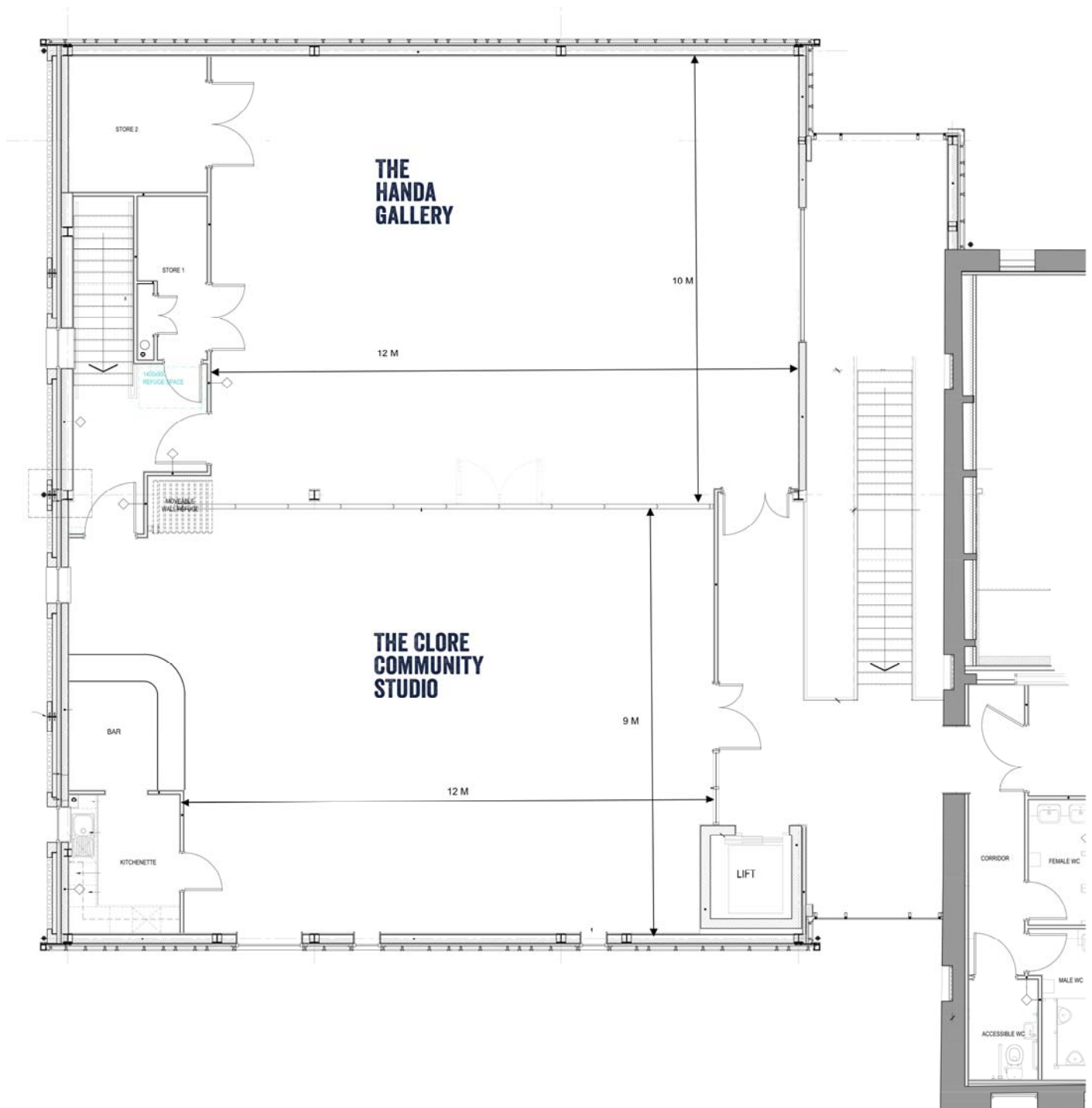
The Handa Gallery has been home to a series of exciting exhibitions so far, from the inaugural CONNECTION art exhibition, which showcased new works of art with a Norfolk link, to a colourful collection of children's artwork from the local primary and secondary schools. Light and airy, with movable art boards, this upstairs gallery space is also easily accessible thanks to the lift and stairs.

<b>Key attributes</b>	<b>Moveable art boards</b> <b>Light and airy</b> <b>Adjustable track lighting system</b> <b>Floor Boxes</b> <b>Air Cooling System</b> <b>Underfloor heating</b> <b>Acoustic Cladding</b>
<b>Max Capacity Standing</b>	<b>Standing        150</b> <b>Cafe                90</b> <b>Theatre            100</b> <b>Boardroom        40</b>
<b>Dimensions</b>	<b>12 metres by 10 metres</b>
<b>Rates</b>	<b>Variable rates ranging from £500 to £1000 per week (please phone to discuss options)</b>
<b>Accessibility</b>	<b>On 1<sup>st</sup> Floor, accessible by stairs or lift</b>
<b>Facilities/technical services available</b>	<b>106 inch Flat Screen for presentations direct from file or laptop</b> <b>Chairs and Tables</b> <b>Toilets facilities opposite on same floor</b> <b>Flipchart and pens</b>

## Floor Plans

This floorplan shows The Handa Gallery side by side with The Clore Community Studio on the 1<sup>st</sup> Floor of the Wells Maltings. There is access via stairs and a lift.

Just visible in the bottom right hand corner are facilities including wheelchair access.



## Hire Enquiry Form



Thank you for your interest in hiring one of our rooms. Please can you complete and return this form to: The Maltings, Staithe Street, Wells-Next-the-Sea, Norfolk NR23 1AU.

Alternatively you can use our online form available on our website.

We will contact you as soon as possible with availability. Rates advertised are our standard rates, please talk to us about specific requirements or if you need any further information. Contact: 01328 711378. Thank you.

<b>Name</b>	
<b>Company Name</b>	
<b>Telephone</b>	
<b>Address</b>	
<b>Contact Number</b>	
<b>Email</b>	
<b>Are you a registered charity?</b>	
<b>Are you a not for profit organisation?</b>	
<b>Which room/s are you interested in?</b>	
<b>Purpose of hire</b>	
<b>Preferred dates</b>	
<b>Times</b>	
<b>Catering requirements?</b>	
<b>Technical requirements (projector etc)</b>	
<b>Which room layout would you like?</b>	
<b>Can we contact you via email, phone or postal.</b>	
<b>Any other comments?</b>	