

## RETURNING TO A NEW NORMAL? SUMMARY SURVEY RESULTS

---

18%

RESPONSE RATE -  
485 PEOPLE

VISITED IN THE LAST  
YEAR

96%

3 IN 4

SAID THAT YOU ARE  
MISSING US

VERY FEW ARE  
COMFORTABLE TO  
RETURN WITHIN TWO  
MONTHS ...

15%

55%

... BUT MORE THAN  
HALF FEEL HAPPIER  
RETURNING WITHIN  
THREE TO SIX MONTHS

ALTHOUGH 25%  
WOULD COME  
BACK FOR THE  
CAFE AND VISITOR  
INFORMATION  
SOONER

1 IN 4



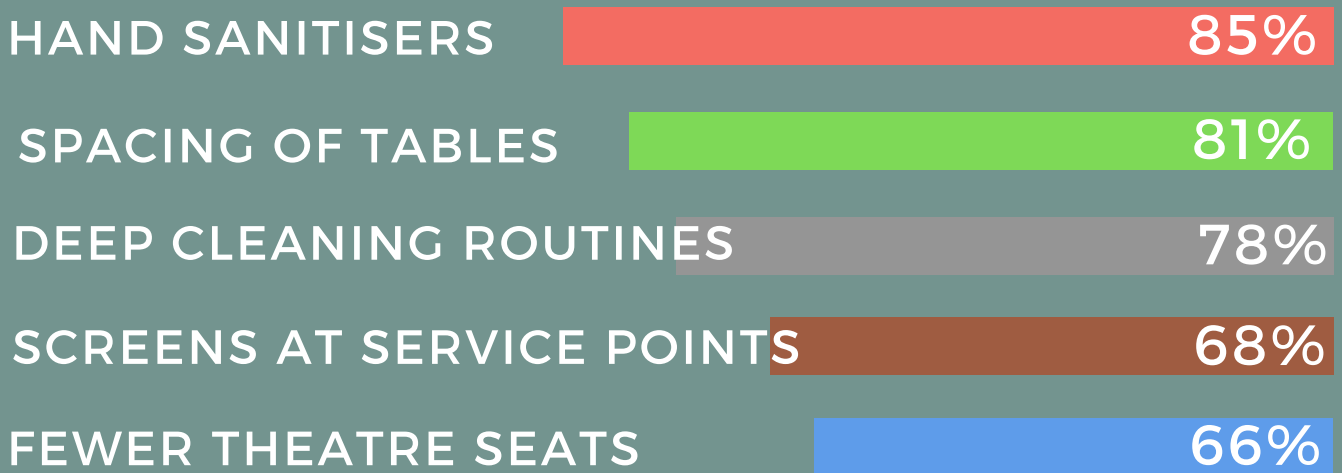
*i*





## PROTECTIVE MEASURES

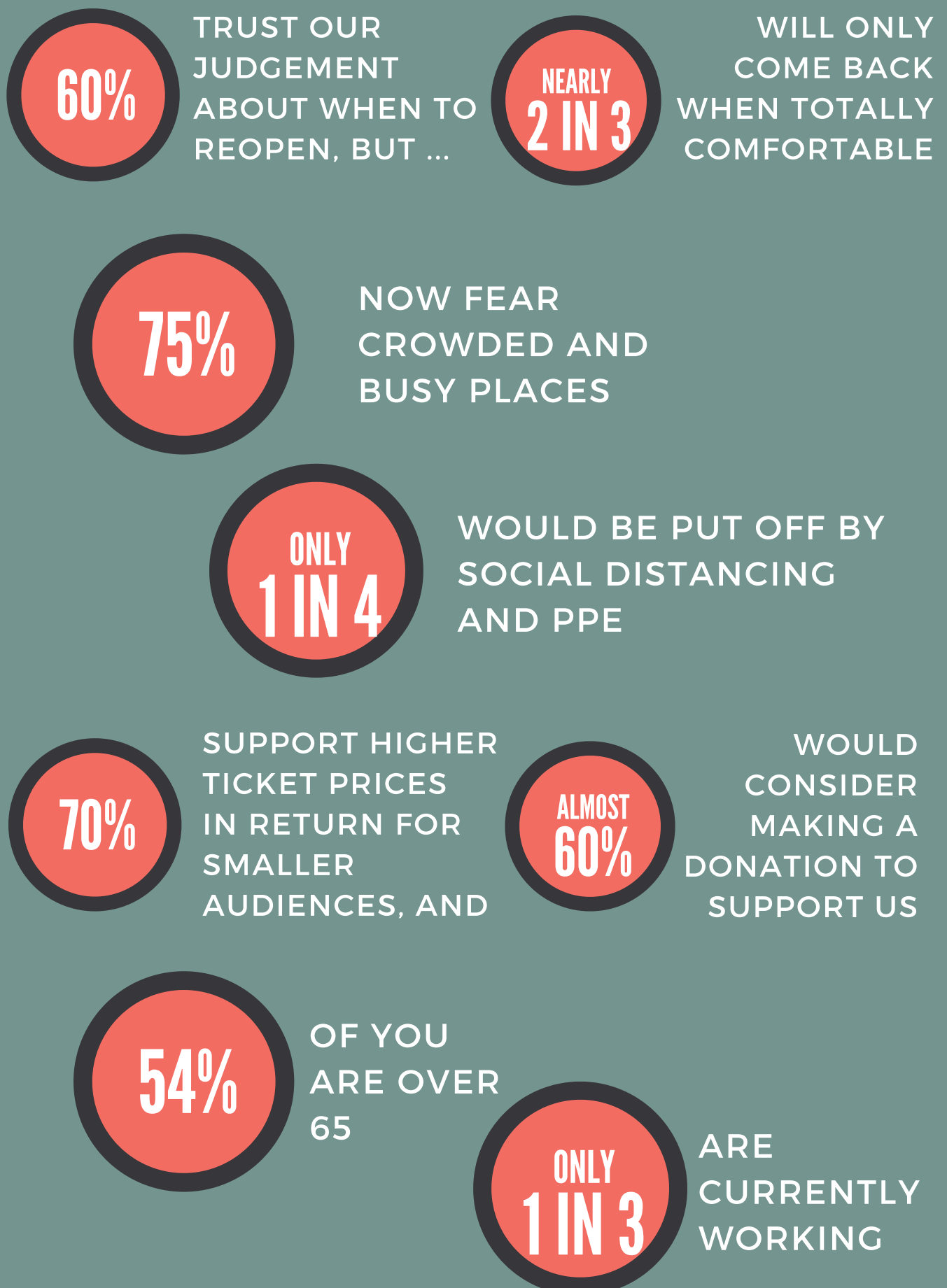
### THINGS YOU WANT TO SEE ...



### AND THINGS YOU DON'T



## YOUR THOUGHTS



*Thank you*

TO EVERYONE THAT TOOK PART IN THIS SURVEY